



Hello and Welcome back to are update on our Nlaka'pamux Environmental Management Program!

My name is Marsha Spence, and I will be presenting today. I am the Cumulative Effects Coordinator for LNIB's Economic Development Department. My job is to coordinate the development of the Nlaka'pamux Environmental Management Program. If my other team members could please introduce themselves Leesa Mike, Marc d'Entremont (Away), Monica Charters.

During today session its will mainly be focus on what we discussed the last few months and an overall summary of what is most important to our members based on the participation.

This is our fifth community engagement session the last one was June 29, 2021, Was a smaller turn out be we got great feed back from members who attended.

We would like to record this session for quality assurance, and for members who can't make the presentation today. If anyone has any objections to this, please let us know.



Presentation Summary

1. Nlaka'pamux Environmental Management
2. NEMP Technical Aspects
3. Mapping Exercise
4. Community Values Overview
5. Animals
6. Air
7. Plants
8. Water
9. Cultural
10. Monitoring Programs
11. Discussion & Questions

On today's session we will covering what we have discussed to date for following (Slide)

As per most of our sessions there is two hours allotted. This presentation will take approximately hour giving time at the end for discussion and feedback. We want to make this session as interactive as possible, so throughout the presentation there will opportunities to participate in survey questions, after which there will be draws here you have chance to win a \$50.00 gift card.



We talked in the beginning about the importance of understanding the impacts from activities happening within our Traditional Territory. And the accumulation of activities like TMEP, farming, and logging or industrial combined can greatly affects our land and resources. We also talked a bit before our Goals for the program is to protect our land and way of life based on the values that are most important to our community. In the form of a natural resource management system in which we can implement methods to mitigate or reduce the impact on the environment

. Are Hopes being with the program we can

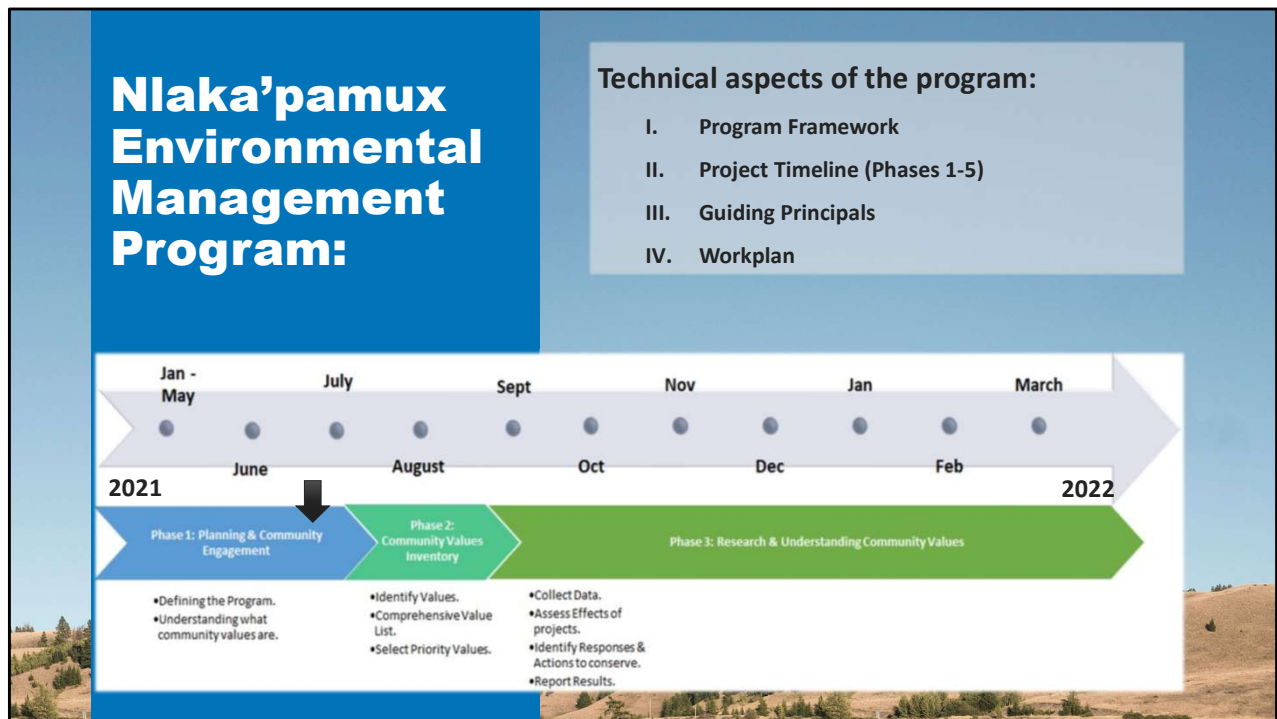
permanent part of the Economic

Development Department. Also keeping members informed as to the conditions of there resources and provide opportunities to members.

The next slide ill go into more detail as to what phase we are in.

For anyone new today the Nlaka'pamux Environmental Management program:

is being developed to protect our land and way of life based on the values that are most important to our community. In the form of a natural resource management system in which we can implement methods to mitigate or reduce the impact on the environment, based on the values that are most important to the LNIB community.



Update as to the Program status, we are transitioning from phase 1 into phase 2 where we take the values discussed from all the previous sessions and define our priority values. Also like to mention comments from previous sessions helped us with building some of the technical aspects of the program being the Program's framework, Guiding principles and overall workplan goals. This will continue to be defined as we start to understand what is most important to our members.

Mapping Exercise

- **Endangered Species**
- **Critical Ecosystems**
- **Critical Habitat**
- **Cultural Heritage Sites**
- **Forestry**
- **Watershed**
- **Oil & Gas Permits**
- **Reserves**

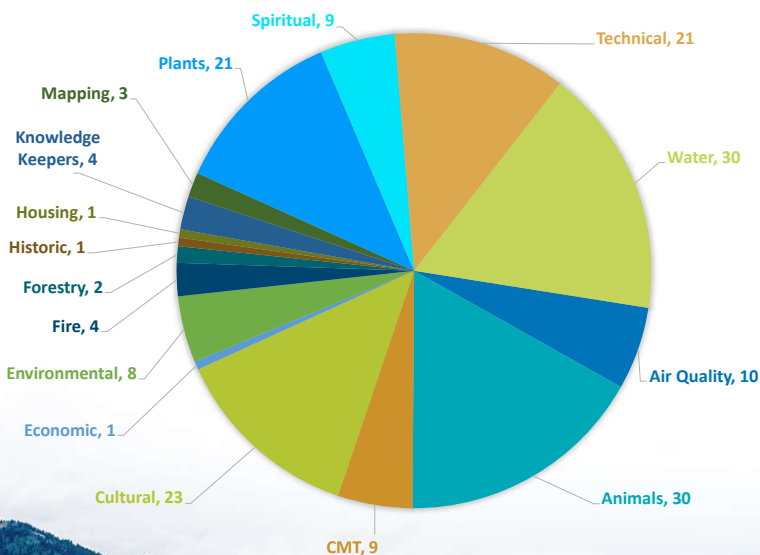


We showed this at our last session. And with some improvements we would like to show again. Also, for members who where unable to attend our last session.

Monica

Community Values

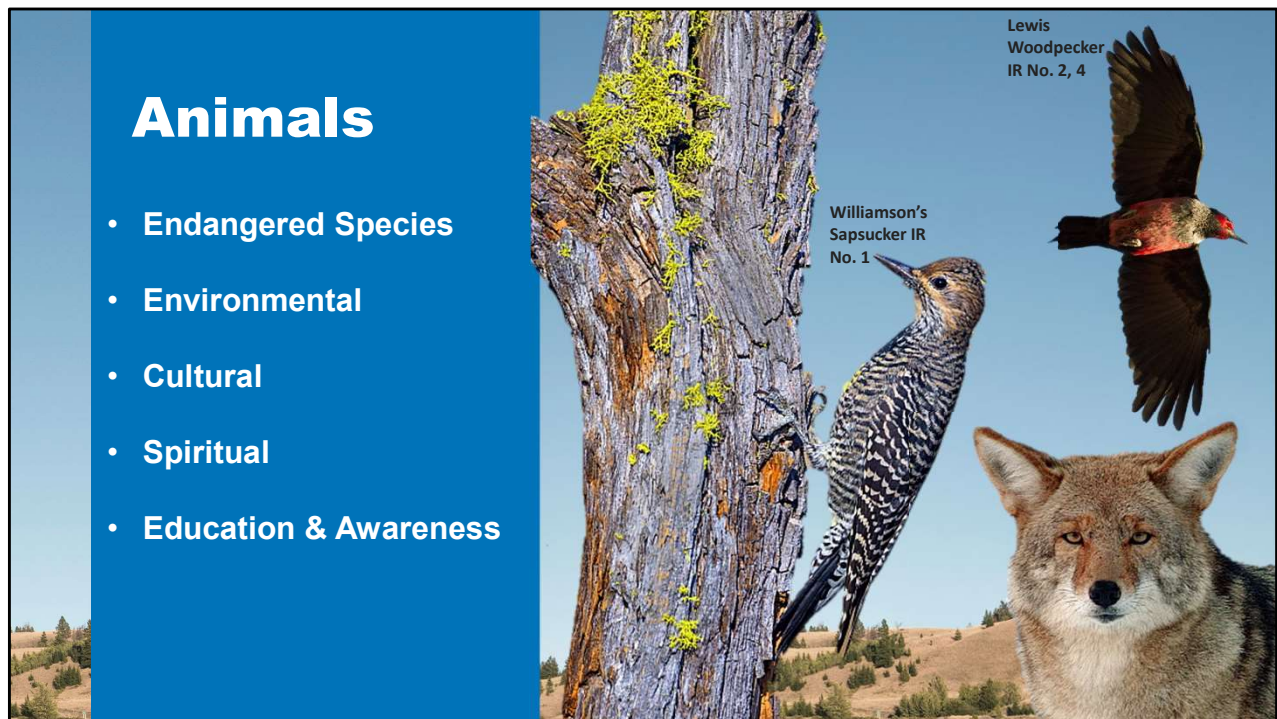
Values	Comments #'s
Air Quality	10
Animals	31
CMT	9
Cultural	23
Economic	1
Environmental	8
Fire	4
Forestry	2
Historic	1
Housing	1
Knowledge Keepers	4
Mapping	3
Plants	22
Spiritual	9
Technical	21
Water	30
Grand Total	178



So, this is more of a visual of as to what been discussed since January. Everything that has been discussed has been accounted for. This may not capture overall picture of everything but many of the values talked about overlap with each other. Based on what's of interest we will start looking at ways to monitor and understand these values. The next few slide I will go into more detail about most of these values to give everyone a summary of how things are starting to play out based on the values and concerned expressed by members.



\$50.00 Gift Card draw and Poll question
Monica



OK! So, for animals we covered Endangered Species: On and off reserve, and how many are within our Traditional Territory.

For some Environmental concerns members mentioned "The over population of coyotes on reserve and no measures have been done in the past to deal with these concerns". (Marc who's not here today said sign ecosystems off balance)

We also talks about Recreational activities scaring deer and bears from there paths.

So, last session I talked a bit about some inhouse policies to govern these issues as of right now there's nothing with exception of The Species at Rick Act (SARA) applies on reserve.

Lands is working on developing something.

Talked about the importance to Cultural, Spiritual: Connections to animals. And mentions previously for Keystone Species, and its importance.(is an organism that helps define an entire ecosystem. Without its keystone species, the ecosystem would be dramatically different or cease to exist altogether. Keystone species have low functional redundancy) The interest into to know more about Grazing and the historical impacts on land and resources.(Which depending on the level of interest we could do more research regarding this). Discussion around Beetle trees, concerns around fir being hit. Ivan was helpful last session helping us understand these the implementation measures that are in place transportation measures.

And for all Values not Just animals there was an interest in using this initiative to bring Education & Awareness to our community.

Feel free to add any comments or share.



Talked about Air Pollution: From Local mines, And smells coming from industry near reserves. We also talked about Burning on reserve: garbage as a ongoing issue. Last session talked a bit about current inhouse governing policy like the Lands Policies: related to the concerns around garbage burning. And strong chemical smells coming off from industrial companies near reserve. And found Currently, there is no policy that governs burning on reserve, but the Lands Department plans to develop one in the future after other projects are completed. But mentioned by the rep there are likely civil (court) remedies available to deal with chemical smells coming on reserve and it depends on the specifics.



Education programs on how to start a garden, choose seeds, container planting, harvesting and storing and more.

They have Expanded the garden with more crops and added more fruit trees. There are also Family gardening plots available to community families who wish to grow their own food. Have their own pollinator's as you can see an image of Beehives which I thought was very interesting. And they do have Traditional medicine garden, and this is a community effort garden where members bring in medicinal plants and can plant them. I found they almost have all the main medicinal plants such as woo sum, stinging nettle, mint, saskatoons, yarrow, rose, birch, lodgepole pine. And some of our common food like potatoes, garlic, Fruits all the goodies we like to eat.

Some of the Shulus Garden Programs are as following:

- Volunteer Program that will trade produce for your volunteered hours
- Produce through LNIB Community Health Programs
- Produce to the Community Soup Kitchen, Elders, Good Food Box

They also have contact list for anyone who may want to be contacted for gardening and nutrition seminars. Open Monday- Friday. Some interesting things they use organic compost. Their medicine garden is planted in 4's. They also have 7 acres of lands and 7 lots. And only 2 acres are actively being used. Also have a green house at NVIT and provide produce for culinary program. Retention pond for water. But have not collected enough run off for it to be used.

Water

- Endangered Species
- Environmental Concerns
- Drought and Limited access
- Cultural, Legend & Stories



such as water.


Cultural : Investigate practices or measure we used to do back in the day. And the Ceremonial and Spiritual importance These could also be separate values.

Also using Legend & Stories: Help us better understand why water is so important.

Education & Awareness: Once we can determine a strategy to protect our resources, we most defiantly work to educate are youth our members specially when it comes to water.

Possible implementing Legends and stories help us better relate.

Cultural



Knowledge Keepers Resource List

- I. Trapping & Hunting
- II. Gathering
- III. Resource directory for Traditional knowledge and or knowledge keepers

Cultural Department Resources and Activities

- I. Ribbon skirt making
- II. Jingles dress making session
- III. Pressure cooking Spring Salmon
- IV. Drum Making

Stories and Legends

- I. Reading groups and story telling.

Cultural Modified Trees

Lots of interest in our cultural values such as building Knowledge Keeper Resource List: That could be accessible for all members, Historical information on what the valley was before, talk to old timers. Build something with local knowledge.

Cultural Department Resource and Activities, currently*** Stories & Legends: Cultural department, reading group for elders and youth. Culturally Modified Trees: Bring back to our community, along with making this an educational piece. Possibly the health center. Just wondering if the members I sent stories to received them ?

****Bringing CMT back to our communities*****

Monitoring Programs

On reserve sites:

- Air Quality
- Endangered species
- Vegetation surveys
- Water Quality measures
- Educational site



Based on what interest were expressed we were thinking that starting investigate methods to monitor to better understand concerns related to are Air, Animals, Plants, Water.

We could pick locations on reserve and gathering information through various types of monitoring technics. Like for air pollution or quality, we can put Air Quality measures which will help us identify air quality concerns. And for Endangered species of wildlife concerns use (Wildlife cameras or conduct wildlife surveys). And for vegetation we could monitor growth of vegetation. Along with identifying plant species at risk and protecting a conserving these sites. Use water quality measures to identify and understand other impacts in relation to water. Where applicable all dependent on the sites picked. And with these technics we can do this for every season. And Over time we can better learn and start to implement measures to protect. And use these sites for educational awareness and for community and youth.



\$50.00 Gift Card draw and Poll question
Monica



Discussion & Questions

Discussion and questions

If there was anything you think that I may have missed or is of interest to you, please feel free to share its critical for us to know what your concerns may be.

Are Next session will be in person and virtual, Sept 9, 2021, there will be two sessions with a dinner to be provided. Session will be the same its just so some members who can't make the first session can attend the second.

Hoping to have pamphlets and website available for this event

References

- Stock imagery (online source) retrieved from:
 - <https://unsplash.com/s/photos>
 - <https://elements.envato.com>
 - <https://depositphotos.com>
 - <https://www.twenty20.com>
- Some photos courtesy: Jonathon Forbes
- <https://www2.gov.bc.ca/gov/content/environment/natural-resource-stewardship/cumulative-effects-framework>
- <http://www.metlakatla.ca/stewardship/cumulative-effects>
- https://en.wikipedia.org/wiki/Natural_resource_management
- All about birds – Lewis Woodpecker



**LOWER NICOLA
INDIAN BAND**

References