



Hello, Welcome back everyone! My name is Marsha Spence, and I will be presenting today. I am the Cumulative Effects Coordinator for LNIB's Economic Development Department. For whom that don't know me. My job is to coordinate the development of the new Nlaka'pamux Environmental Management Program. If my other team members could please introduce themselves Leesa Mike, Marc d'Entremont, Monica Charters.

For anyone new on the call today. During this information session, we will talk about the Nlaka'pamux Environmental Management Program, which seeks to understand the impacts to the natural and cultural resources within our Traditional Territory. And, how the involvement of community members is critical to the success of this program.

This is our third community engagement session the last one was April 29, 2021, we got great feed back. And would like to provide an update as to values defined in the last session.

We appreciate your feedback. We would like to record this session for quality assurance, and for members who can't make the presentation today. If anyone has any objections to this, please let us know.



Presentation Summary

1. Nlaka'pamux Environmental Management
2. Project Timeline
3. Guiding Principals
4. Community Values
 - Environmental Values
 - i. Air
 - ii. Animals
 - iii. Plants
 - iv. Water
 - Cultural Values
 - i. Food & Harvesting
 - ii. Ceremonial
 - iii. Spiritual
5. Communication
6. Discussion/Questions

For anyone who missed the last presentation I will give a brief description of the Nlaka'pamux Environmental Management Program on the next slide.

Listed here is some information on what we will be discussing during this session. (Slide) .

We want to make this session as interactive as possible, so throughout the presentation there will opportunities to participate in survey questions, after which there will be draws where you have a chance to win a \$50.00 gift card.



So, why have we started this program? Lower Nicola people have been stewards of our land and resources.

Through this Nlaka'pamux Environmental Management Program, we hope to uphold this responsibility and the values that are most important to our community.

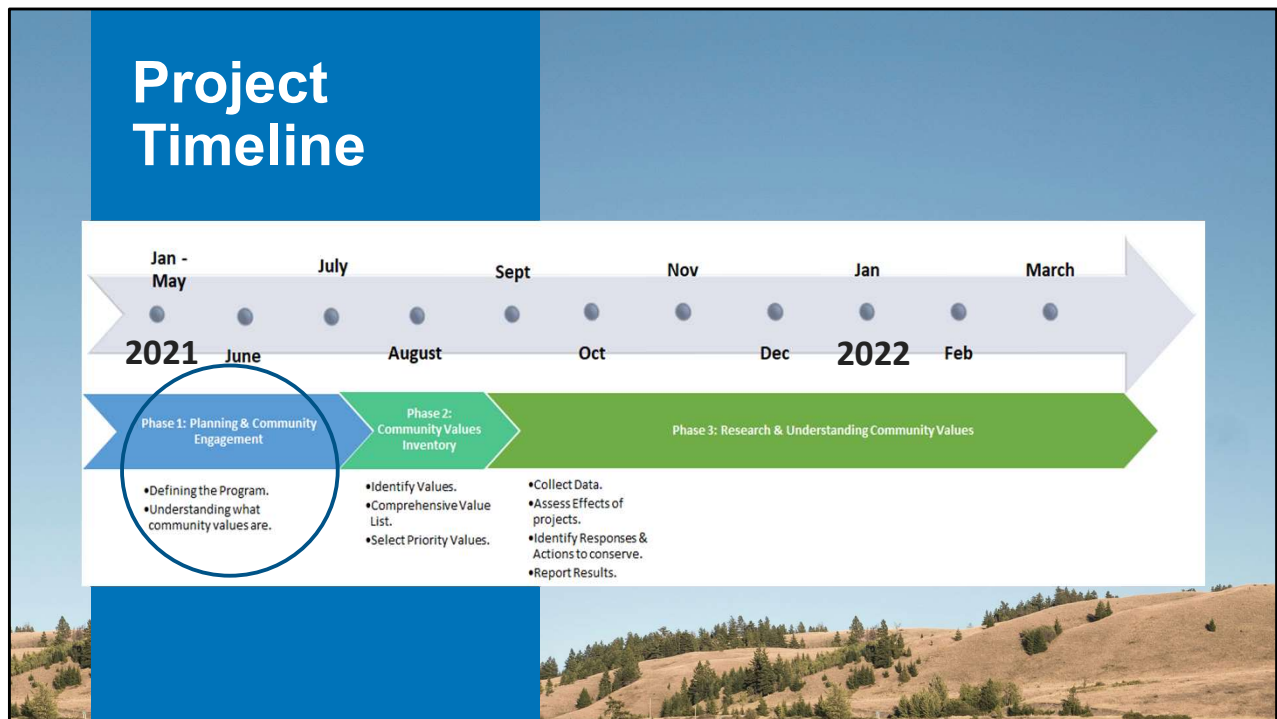
And to Understand, Protect and Restore these values from activities happening within our traditional territory.

With this program we hope to have:

- Community involvement.
- Have as a permanent part of the Economic Development Department.
- And will provide information on the condition of resources to the community.
- Also, to provide opportunities for members.

Question about what opportunities are? Responses participate in information session, Potentially Monitoring type job opportunities. This is driven by Community values.

Any questions about the program.



Understanding LNIB’s community values will allow us to move forward with this project and proactively respond to impacts associated with cumulative changes. As you can see in the timeline, we are currently still in Phase 1. Our goal is to have a good thorough understanding of what our community values are before moving on to the next phase. This gives a general idea as to what we project for each phase. As described in our last session there are 5 phases in total.

Phase 1. Planning & Community Engagement

Phase 2. Community Values Inventory

Phase 3. Research & Understanding of Community Values

- a. Collect data
- b. Understand the effects of projects
- c. Identify responses and actions to conserve / protect
- d. Report results

Phase 4. Develop and implement a management plan (based on the actions) that will provide direction for a more informed decision-making process

Phase 5. Have a Nlaka’pamux Environmental Management Program to support

better outcomes for the resources within LNIB's Traditional Territory



Guiding Principles

- **NEMP is a culturally relevant program that incorporates LNIB's relationship with the tmíxw ("all our territory").**
- **The active participation of LNIB community members is the foundation of the NEMP.**
- **NEMP is dedicated to protecting our land and way of life based on the values that are most important to our community.**
- **NEMP will collaborate among LNIB departments and other Indigenous groups, governments and land users to increase the long-term success of the program.**
- **NEMP is designed to be long-term and iterative, with multiple opportunities for critical reflection and improvements, allowing the program to explore a broad range of values and to find equally broad solutions.**

We are in the processes of developing draft Guiding Principles for the program: This will be our guidance for the program and give us a strategic direction. Which will keep us focused and grounded. This is only a draft; nothing written in stone and would like to know what your thoughts are on this? (Slide)

Poll Questions & Draw



\$50.00 Gift Card draw and Poll question
Monica

Environmental Value:

Air

- Air Quality
- Pollution

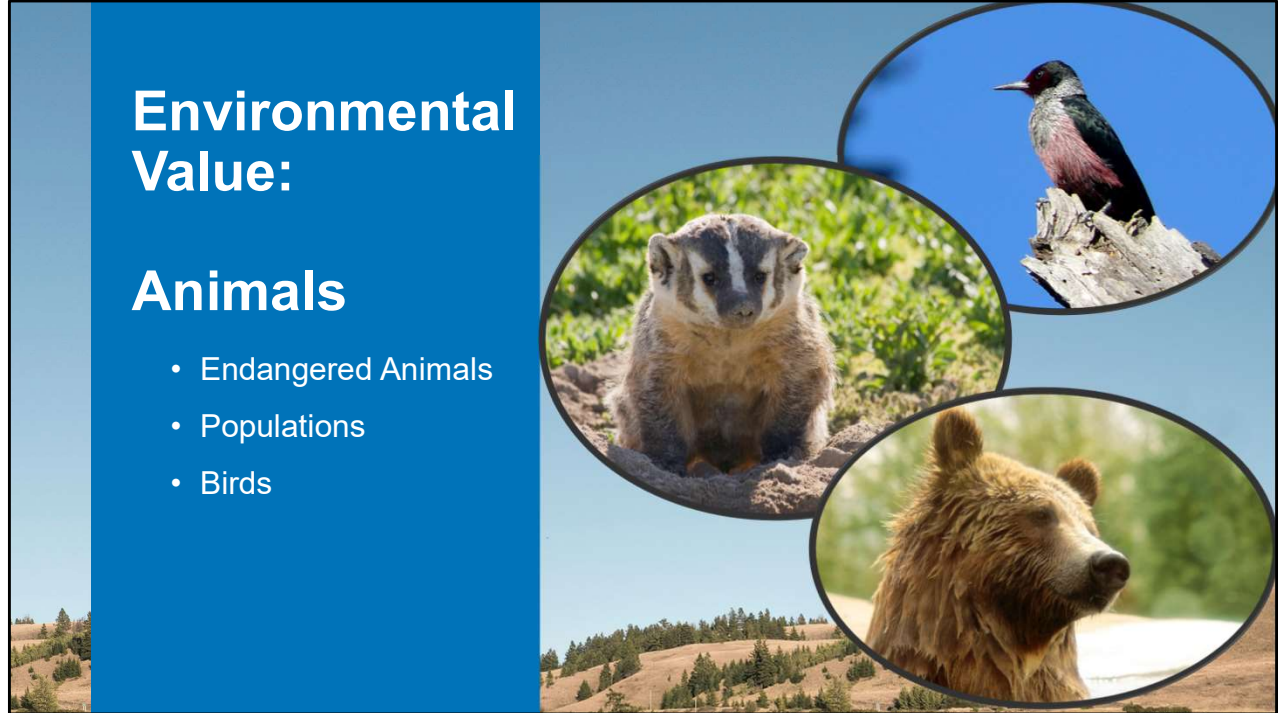


Environmental values were discussed at the last session they could be anything in relation to Air, Animals, Plants, Water or Land.

We took the values from the last session and would like to discuss them further and see what the community would like us to focus on first.

This is what we heard to date: Air was discussed as an ongoing issue for members, and we would like to know more. What are your concerns when it comes to air quality?

And what would you like to see done about issues relating to Air? An example, in the last session we discussed the amount of dust coming of the Nicola Mines tailings pond.



Values related to Animals.

There was some expressed interest in:

- Endangered Animals
- And their populations
- Birds.

What are your concerns around this topic and what would you like done in relation to this value.

Environmental Value:

Plants

- Abundance of food plants
- Endangered Plants
- Planting traditional plants on rehabbed roads or locally
- Access issues to resources



Values related to plants.

Members wanted to know more about:

- Abundance of food plants
- Endangered plants/invasive species
- Planting traditional plants on rehabbed roads or locally
- Access issues to resources

What are your concerns when it comes to plants is this accurate as to what your concerns are?

And what would you like to see done about issues relating to plants?

Environmental Value:

Water

- Drought
- Limited access
- New developments
consuming water



What are your concerns around this topic and what would you like done in relation to this value.

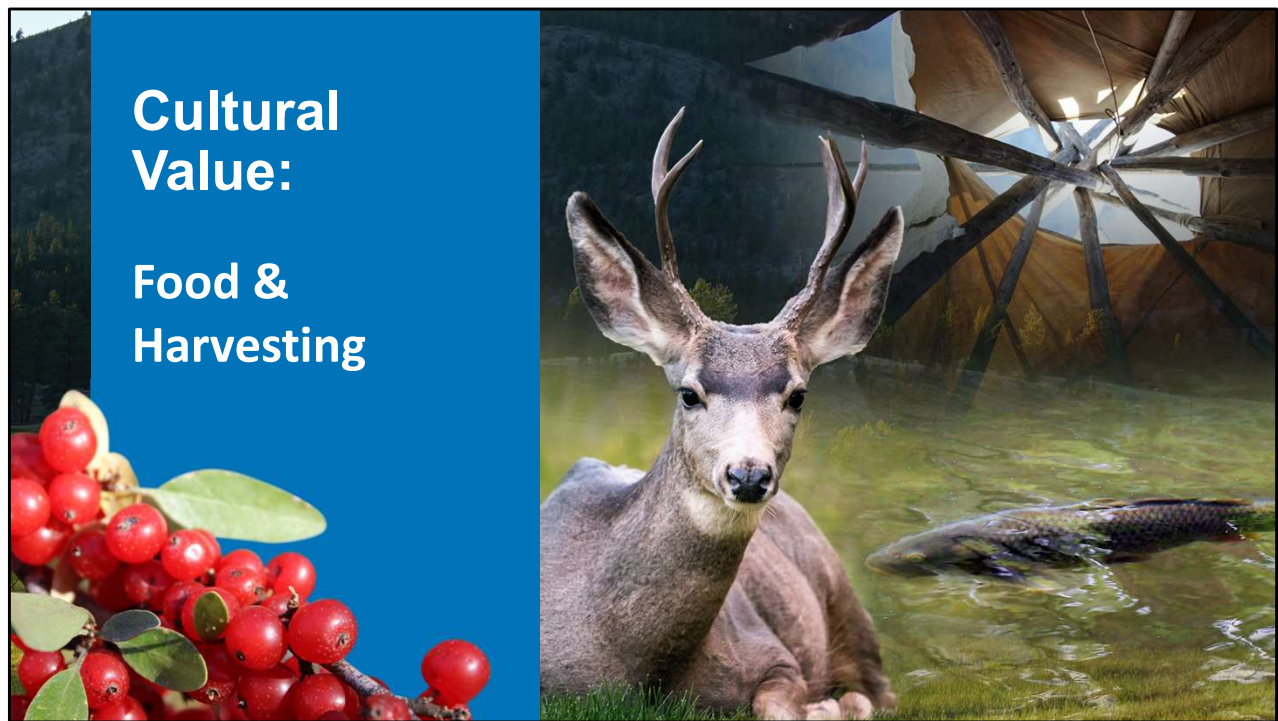
Water: Drought, Limited access, water conservation methods. How our ancestors dealt with these issues.

We would like to further discuss community members feedback on this value and what they would like to see or know about this issue ?

Poll Questions & Draw



\$50.00 Gift Card draw and Poll question
Monica



In our last session we talked about Cultural values and for anyone who is new to the presentation this is activities happening on our land that directly impact our cultural identity.

Cultural Values – Food, Harvesting it was discussed that some members would like to know more about:

- Time of year, the abundance, sap, mushrooms. Is this something everyone would like to know more about moving forward. And any concerns that you may have regarding this.

There are a few examples of what has been done through the years to both support and uphold our cultural identity. The Traditional Land Use Study works to combine community knowledge with ethnographic, archival, and archaeological information to highlight places and values of cultural, heritage, economic, or community importance. LNIB also has departments that specialize in working with the community in cultural teaching and harvesting.

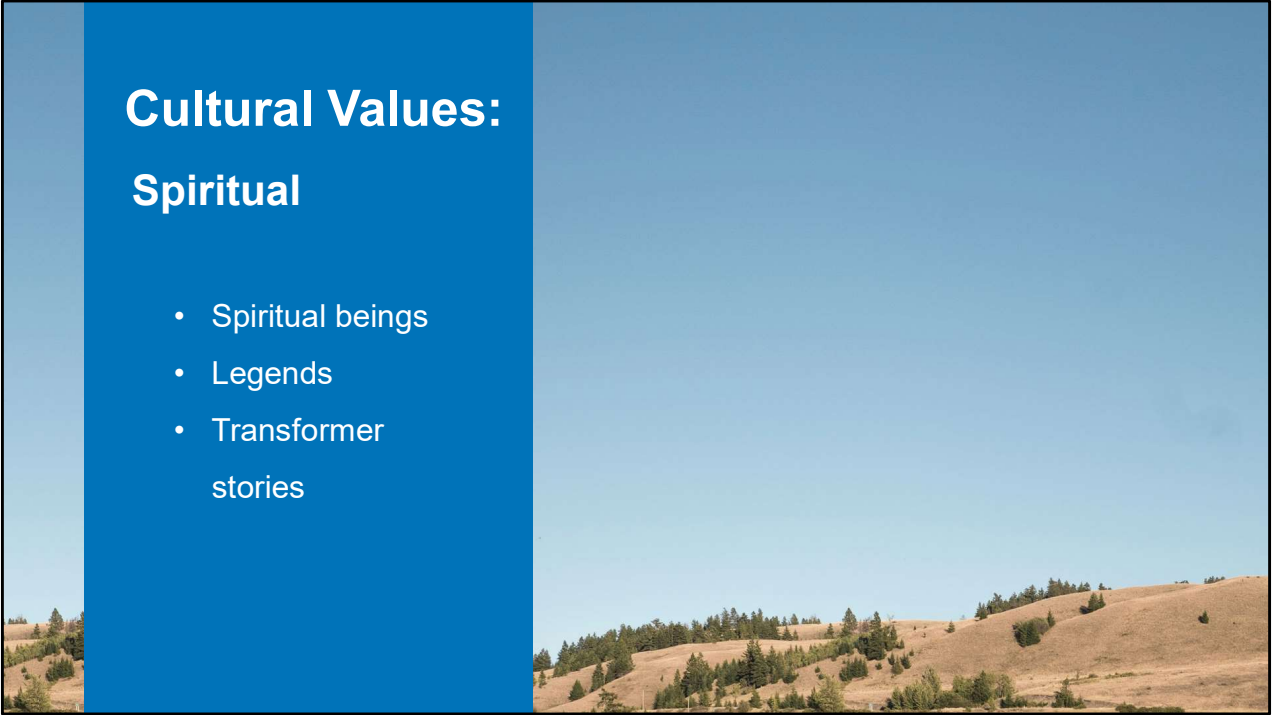
What are your concerns or values related to how our cultural identity is affected?

Cultural Value:

**Social &
Ceremonial**



Social & Ceremonial: Would this be something that our community would like to see be apart of this program or for us to investigate? How activities may directly impact our social or ceremonial traditions/teachings.



Cultural Values: Spiritual

- Spiritual beings
- Legends
- Transformer stories

Spiritual was mentioned at the last session. And that members wanted to know more about spiritual beings.

And how they will be impacted by activities. Just to confirm with everyone is this something you would like to know more about?

Or to be apart of this program?

There so many great legends and stories. (Transformer stories)

There was a lot of discussion around knowing the old way and how to deal with concern. Like how to know how our ancestors delt with these issue

**What would
you like to
discuss at
our next
session?**



\$50.00 Gift Card draw and Poll question
Monica



Some up coming items we are adding to our communication strategy:

- Monthly information sessions
- Newsletter articles
- Social media posts
- Survey Questionnaire
- Website Project Page Launch

Best form of communication

- Email
- Zoom
- Facebook
- Website

Other text

Collaborating and ICCE, other groups in the Nicola Valley. Also to prevent any duplication of work. Some values may be addressed by different groups but we will keep you informed. Lot of initiative or programs happening in the valley

Did you understand today's presentation**

Discussion & Questions

Discussion and questions

References

- Stock imagery (online source) retrieved from:
 - <https://unsplash.com/s/photos>
 - <https://elements.envato.com>
 - <https://depositphotos.com>
 - <https://www.twenty20.com>
- Some photos courtesy: Jonathon Forbes
- <https://www2.gov.bc.ca/gov/content/environment/natural-resource-stewardship/cumulative-effects-framework>
- <http://www.metlakatla.ca/stewardship/cumulative-effects>
- https://en.wikipedia.org/wiki/Natural_resource_management



**LOWER NICOLA
INDIAN BAND**

References