



Hello, everyone! My name is Marsha Spence, and I will be presenting today. I am the Cumulative Effects Coordinator for LNIB's Economic Development Department. My job is to coordinate the development of the new Nlaka'pamux Environmental Management Program. If my other team members could please introduce themselves Leesa Mike, Marc d'Entremont, Rod Malcom, and Monica Charters.

During this information session, we will talk about our new Nlaka'pamux Environmental Management Program, which seeks to understand the impacts to the natural and cultural resources within our Traditional Territory. And, how the involvement of community members is critical to the success of the of this program. We had a information session in Jan 20, 2021 we got some great feed back therefore updated our approach to communicating our program.

We appreciate your feedback. We would like to record this session for quality assurance, and for members who can't make the presentation today. If anyone has any objections to this, please let us know.

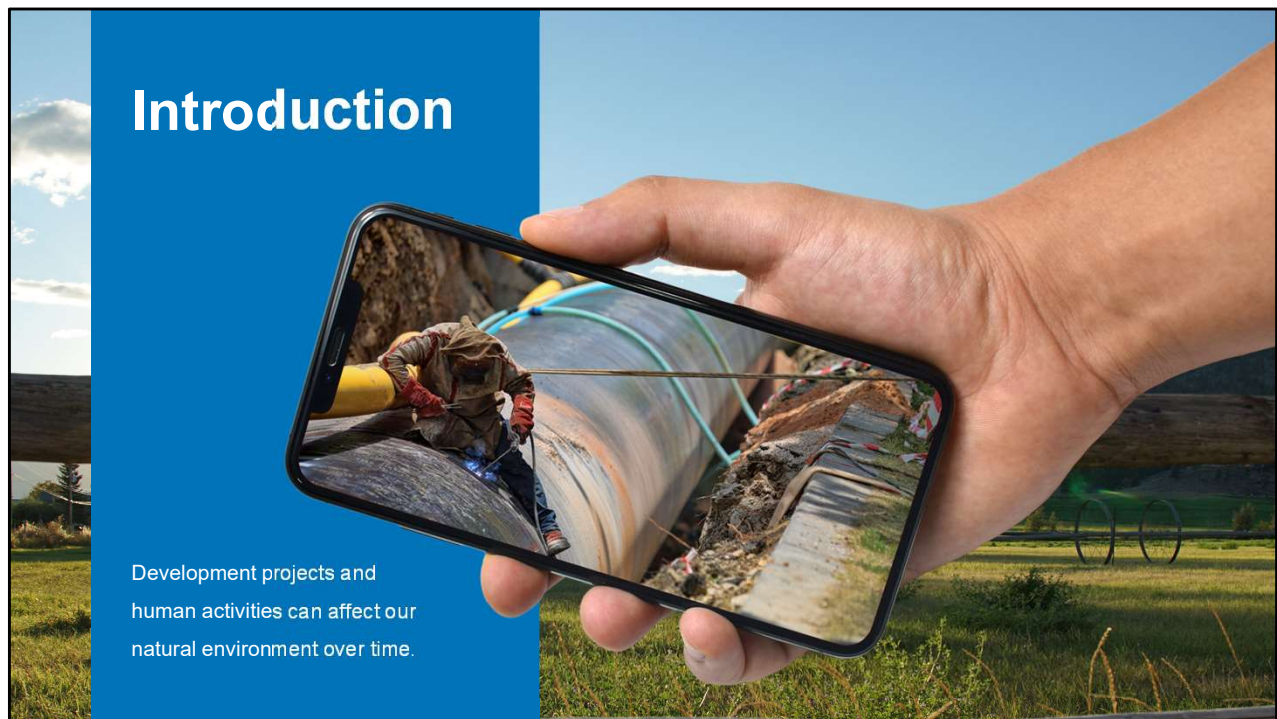
Presentation Summary

1. Introduction to the Nlaka'pamux Environmental Management Program
2. Understanding Impacts and Why?
3. Nlaka'pamux Environmental Management
4. Benefits of Having a Nlaka'pamux Environmental Management Program
5. Program Framework
6. Understanding Community Values
 - Values
 - Environmental Values
 - Economic Values
 - Cultural Values
 - Community Values Inventory
7. Next Steps
8. Discussion/Questions

The objective for this presentation is to give community member a better understanding of what the Nlaka'pamux Environmental Management Program is. Listed here is some of the information on what we will be discussing during this session. (Slide) 3. What the program is!!

For this session there is two hours allotted. This presentation will take approximately hour giving time at the end for discussion and feedback.

Thought the presentation there will opportunity to participate in draw and poll where you have chance to win \$50.00 and answer questions.



On our lands, there has been a growing number of industrial projects such as the Trans Mountain Expansion Project, farming, and logging. Combined, these activities impact the natural environment around us, and while some activities have a greater effect than others, over time these effects add up. As caretakers of LNIB lands and water, these combined or “cumulative effects” are a concern for us and our community.

Understanding the combined effects of these projects is a first step to reducing negative impacts through informed decision-making process. In the next few slides I will be going into more detail on defining what cumulative effects is

Poll Questions & Draw



\$50.00 Gift Card draw and Poll question
Monica

Understanding Impacts and Why?



Impacts from activities being industry or human can accumulate over time thus resulting in what we call Cumulative effects. For some the long-term impacts of activity's we have witnessed through history and the changes that have occurred around us. These can also be impacts caused by natural events. Ex. forest fires. Cumulative effects on our land might be seen as changes to the number of salmon in our waters each year. Whereas the cumulative effects on our people resulting from a development project could be changes to traditional activities or employment rates. By understanding how the various projects within our Traditional Territory impact our land and our people, we can work to ensure future development doesn't permanently harm our environment.



So, why have we started this program? Lower Nicola people have been stewards of our land and resources. Through this Nlaka'pamux Environmental Management Program, we hope to uphold this responsibility and the values that are most important to our community.

Another way to think of this is as stewardship and a method of natural resources management (NRM) – with a particular focus on how the management of these resources affects the quality of life for present and future generations.

We would like to start with issues and concerns raised regarding the Trans Mountain Pipeline project and hope to expand the program from there.

As mentioned, with this program we hope to have:

- Community involvement.
- Have as a permanent part of the Economic Development Department.
- And will provide information on the condition of resources to the community.
- Also, to provide opportunities for members.

Question about what opportunities are? Responses participate in information session, Potentially Monitoring type job opportunities. This is driven by Community values.

Benefits of Having a Nlaka'pamux Environmental Management Program

Goal: predict effects of activities on our environment and develop ways to mitigate or reduce the impact on the environment based on the values that are most important to the LNIB community.

TMEP CMT Decision making process

Culturally Modified tree's (CMT) Identified:

- STEP 1: Feature identified
- STEP 2: LNIB Indigenous Monitors
- STEP 3: CMTs are protected
- STEP 4: Assessing the impacts and effects over time
- STEP 5: Reporting on results

The benefit of having an Nlaka'pamux Environmental Management Program is that we can proactively mitigate or reduce negative impacts within our Traditional Territory from activities and development projects such as the Trans Mountain Expansion Project.

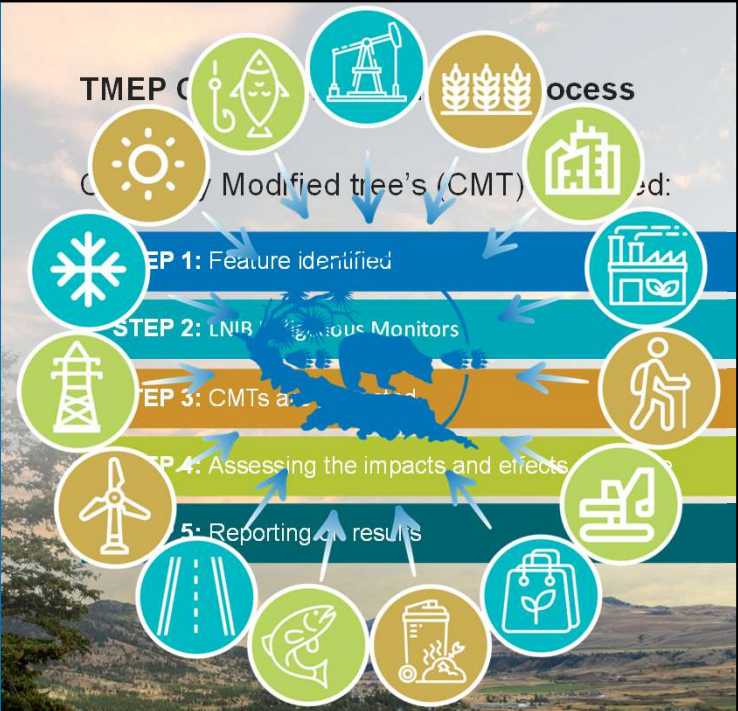
Our goal is to develop a program for LNIB members that will protect our community values by monitoring the long-term, combined impacts of activities. We will have better information that will help Inib decide If a project should occur or if a project should be changed to protect our certain values. Here is a example of a current decision making process we currently have. Example (Slide)

(Marc could jump in if question are asked)

Our decision making will improve when we have a thorough understanding of the cumulative impacts that various development projects and activities have on our environment and our people.

Benefits of Having a Nlaka'pamux Environmental Management Program

Goal: predict effects of activities on our environment and develop ways to mitigate or reduce the impact on the environment based on the values that are most important to the LNIB community.



Our decision making will improve when we have a thorough understanding of the cumulative impacts that various development projects and activities have on our environment and our people.

Poll Questions & Draw



\$50.00 Gift Card draw and Poll question
Monica



Program Framework

1. **Phase 1.** Planning & Community Engagement
2. **Phase 2.** Community Values Inventory
3. **Phase 3.** Research & Understanding of Community Values
 - a. Collect data
 - b. Understand the effects of projects
 - c. Identify responses and actions to conserve / protect
 - d. Report results
4. **Phase 4.** Develop and implement a management plan (based on the actions) that will provide direction for a more informed decision-making process
5. **Phase 5.** Have a Nlaka'pamux Environmental Management Program to support better outcomes for the resources within LNIB's Traditional Territory

The program involves establishing a baseline understanding of the impacts of past, present and future activities within LNIB's Traditional Territory. Conducting an assessment of impacts, and then eventually providing tools to make more informed decision making and support better outcomes of development activities over time. We defined these in a 5 phase framework for the entire program. A foundational step in this process is understanding what our community values are. We are currently in Phase 1 Planning and Community Engagement.

(Slides)



The Program is values focused. To understand the effects of developments within our Traditional Territory, we need to know what our community values are now and into the future.

Things to think about (Slide)

There be more discussion on values and where they currently play a part in our decision making processes.

Poll Questions & Draw



Question 4 instead of 3
\$50.00 Gift Card draw and Poll question
Monica



Understanding community value's, or themes, will ensure a successful Program. Value's will be defined as we learn more about what is important to the community. In the past several members were involved in the Trans Mountain Traditional Land Use Study, this entailed interviews where some areas of concern were identified. Value's could be organized based on their environmental, economic, or cultural values.

So, lets talk more about each of these values and related work that's already underway. Please share comments or questions at any time.

Environmental Values

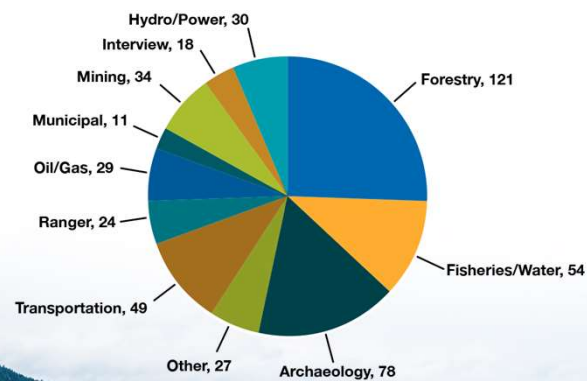
Monitoring effects of activities with our Traditional Territory based on environmental values such as:

- Land
- Plants
- Animals
- Air
- Water

Environmental values and concerns are currently identified through:

- Referral's process
- Cultural monitoring

REFERRAL DATA 2019/2020



Environmental values include anything related to our land, plants, animals, air, and water.

Currently environmental values and concerns are identified through our existing referrals process and cultural monitoring.

Through the referrals process, recommendations are made to mitigate or reduce impacts of projects and activities on our land. The graph here shows the various types of referrals we manage.

Cultural monitoring conducted for certain projects, identifies or confirms the presence of cultural resources.

To track and record all this information, we use a database called Lightship. We also use a mapping system called ARCpro where we identify features. This helps us identify areas that should be protected.

Something to think about what are your concerns or values related to how our environment is affected?

Poll Questions



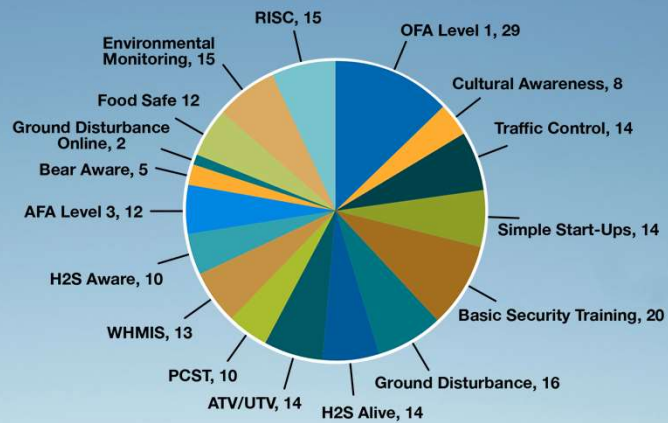
\$50.00 Gift Card draw and Poll question
Monica

Economic Values

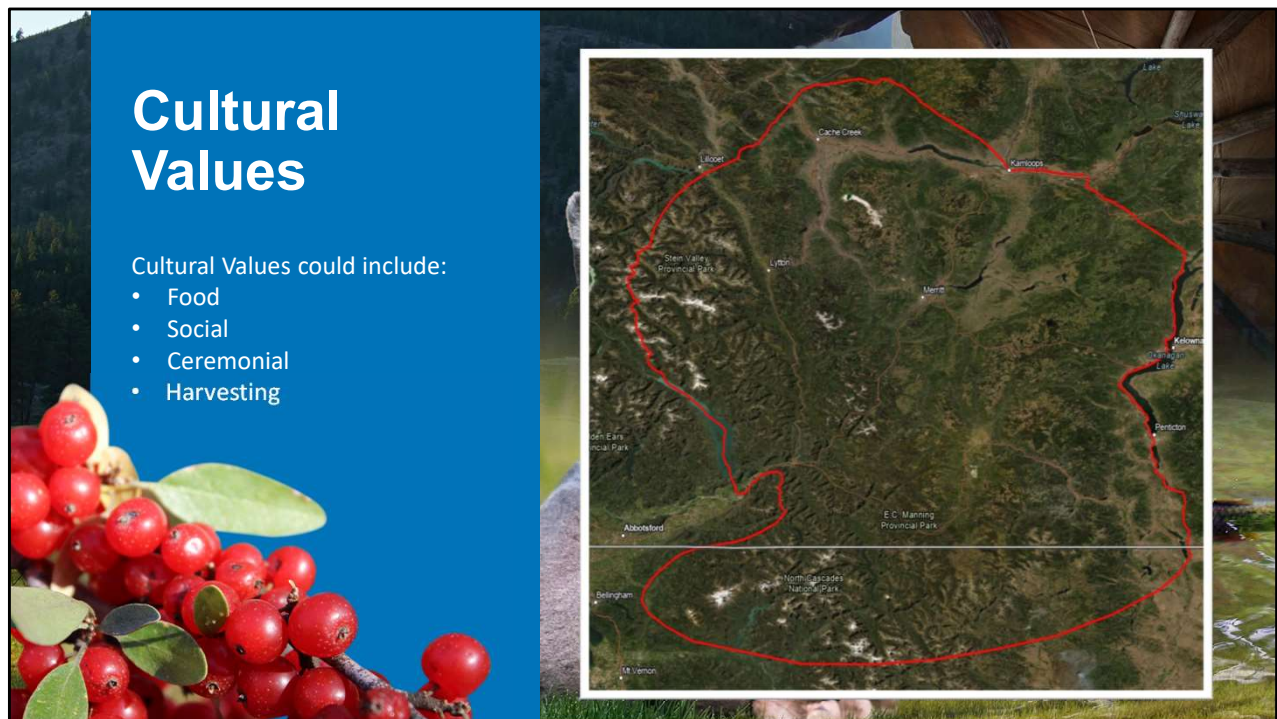
Monitoring effects of activities within our Traditional Territory based on economic values such as:

- Employment
- Self-sufficiency

TRAINING COURSE OFFERED IN 2019/2020



Another value we look at when measuring impacts of activities within our Traditional Territory is economic prosperity. One of the things we look at is the amount of training opportunities that help our community be more self-sufficient and employable. For example, training has recently been offered to help community members gain employment with Trans Mountain. As you can see in the graph there has been multiple training opportunities provided to members. What are your thoughts or values related to how our economic prosperity is affected?



Activities happening on our land also can directly impact our cultural identity. For many this is close to the heart, along with our way of life.

There are a few examples of what has been done through the years to both support and uphold our cultural identity. The Traditional Land Use Study works to combine community knowledge with ethnographic, archival, and archaeological information to highlight places and values of cultural, heritage, economic, or community importance. LNIB also has departments that specialize in working with the community in cultural teaching and harvesting.

What are your concerns or values related to how our cultural identity is affected?



Understanding LNIB's community values will allow us to move forward with this project and proactively respond to impacts associated to cumulative changes. So now we're working to identify what our community values are. We're considering things like whether the values hold traditional importance. Are they sensitive to current and future development activities. Once our Community Values are defined, we will have a level of direction to guide our formal Value Assessment process. This will include prioritizing values based on community input. We understand that many of these environmental, cultural, economic values are linked or overlapping with each other.

Poll Questions & Draw



\$50.00 Gift Card draw and Poll question
Monica

Next Steps

Once we understand community values, we can proceed to Phase 2. Community Values Inventory.

And Phase 3. Research & Assessment of Community Values

Once we understand our community values, we can then complete an assessment process, which will involve collecting data, assessing effects, identifying responses, and reporting back results. The results of the Assessments will then be used to fully develop the Program. This will result in more informed decisions on how to protect our environment and our people based on community values.

- Collect data

- *Will need to define – what kind of data? Dependent on the information collected we will implement studies to understand the impacts.*

- Assess effects

- *Which effects are currently being assessed? Throughout referral process we currently assess impacts by looking the potential environmental impacts and the potential impacts to our Traditional Territory.*

- Identify responses

- *Which responses? How to manage and protect our values. Currently for now there is a Technical team who reviews referrals (Marc?)*

- Report results

- *To LNIB Membership? There is currently no formal method but we hoping to have a method moving forward so all members can keep informed.*

Discussion/ Questions



Discussion and questions

References

- Stock imagery (online source) retrieved from:
 - <https://unsplash.com/s/photos>
 - <https://elements.envato.com>
 - <https://depositphotos.com>
 - <https://www.twenty20.com>
- Some photos courtesy: Jonathon Forbes
- <https://www2.gov.bc.ca/gov/content/environment/natural-resource-stewardship/cumulative-effects-framework>
- <http://www.metlakatla.ca/stewardship/cumulative-effects>
- https://en.wikipedia.org/wiki/Natural_resource_management



**LOWER NICOLA
INDIAN BAND**

References